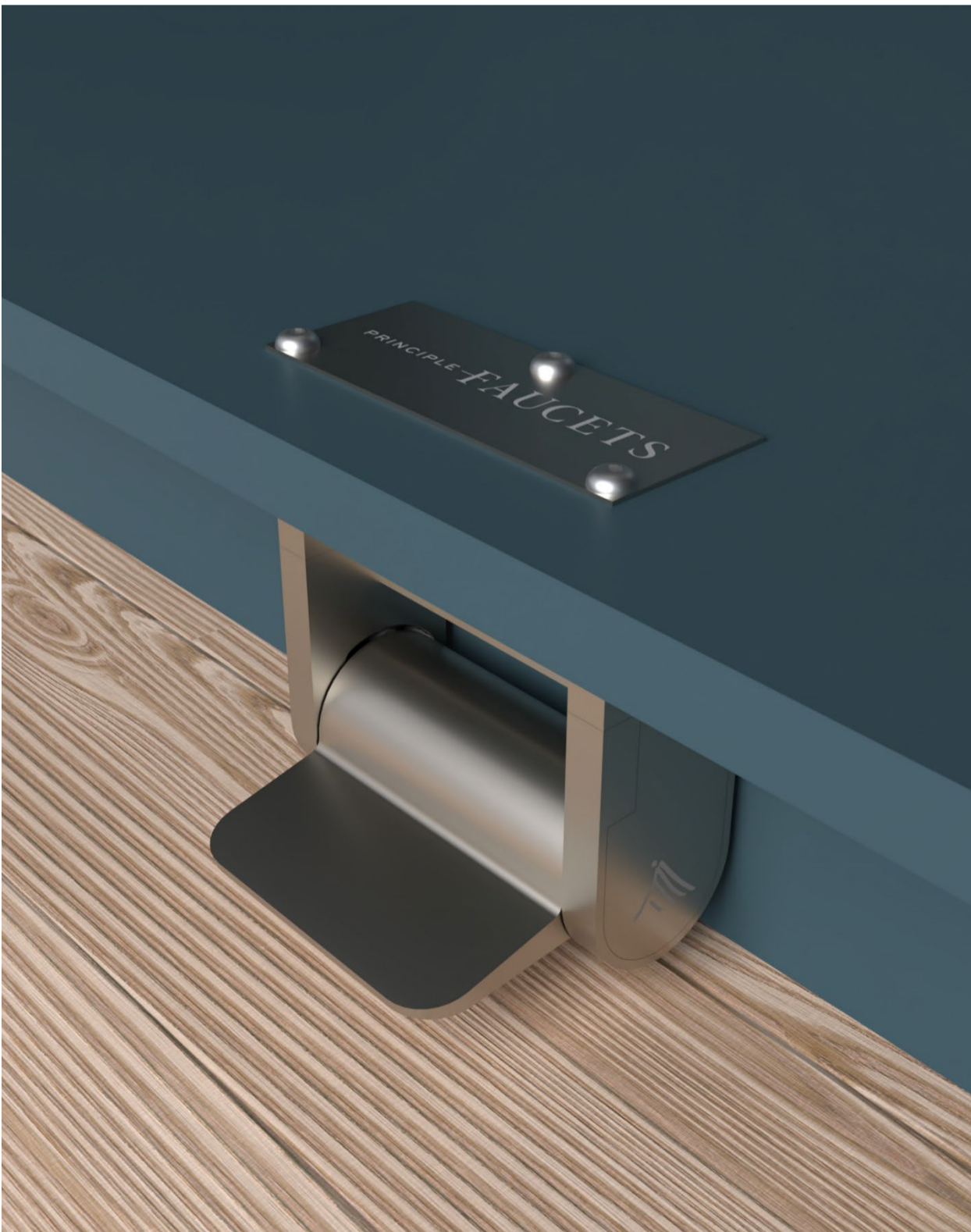
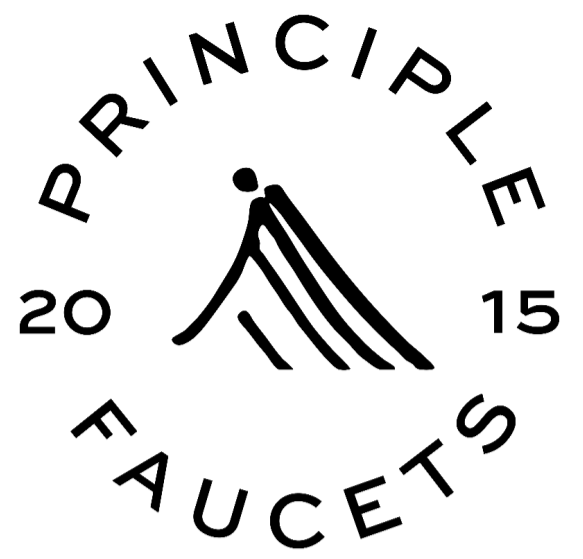


*the*STEP

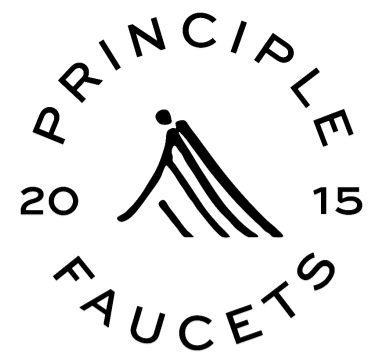
Kitchen & Lavatory Pedal Adapter Systems

Product Information and
Specifications



the **STEP**

Pedal Adapter System



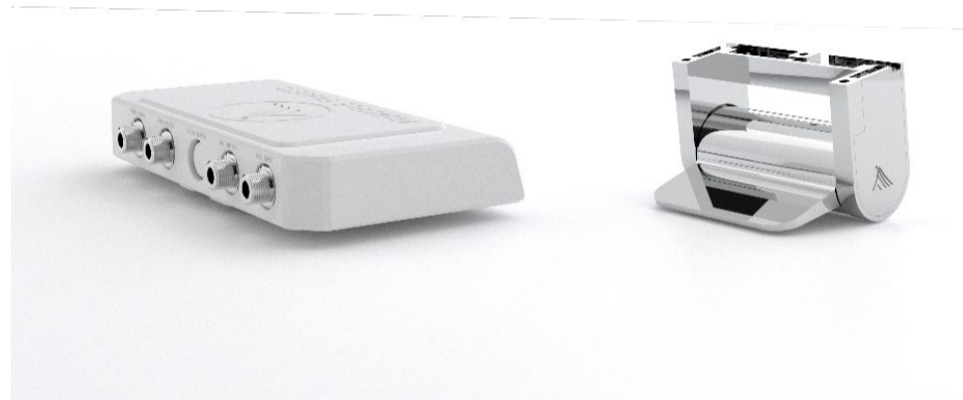
Product Name: STEP 1
Product Number: PF1020001

If you desire the advantages and water savings our pedal system offers but already have a beautiful faucet at home, the **STEP** is for you. The **STEP** is a unique foot pedal system that has been engineered to work with the faucet you already have, in both kitchens and bathrooms. You'll gain the freedom of responsive hands-free water control to help you work cleaner, faster, and minimize water waste...without needing to trash your perfectly adequate existing faucet. It's a win-win!

Includes: Foot Pedal, Control Box

Features

- Intuitive foot pedal control will start, stop, and change flow rate of water (your faucet lever(s) stay in the "on" position).
- Temperature control for the foot pedal water flow is adjusted conveniently with the faucet lever(s).
- *Tap2Flow* command: Tap the pedal once and the water will flow continuously, without needing pressure applied to the pedal (ex: walk away from the sink for a few moments while you fill your pasta pot). Tap again to stop the water, or a 2-minute timer will shut off the water automatically.
- *Faucet Control* command: Tapping the pedal 2-times will allow you to revert to operating the faucet the old-fashioned way (with your hands). Place your foot back on the pedal at any time and apply pressure to reactivate the foot pedal control.
- All supply hoses included for a typical installation.
- Durable metal construction.
- Ceramic disc valves for longevity and performance.
- Compatible with single or double handle faucets.
- Conveniently plugs into a standard 120V outlet (no batteries to waste or replace).



Resources & Downloads

Installation Video

[Part 1 Engine Box](#) / [Part 2 Foot Pedal](#)

Installation Manual

[PDF – 1020001xx_2.1.1.4](#)

Our Warranty

Principle Faucets offers a 6-month, risk-free return policy. We also guarantee all parts will be free of manufacturers defects for the lifetime of the product. For the full warranty details go to www.principlefaucets.com/warranty.

Future Finishes (call for availability)



Brushed Nickel

Finishes:

List Price:

\$425



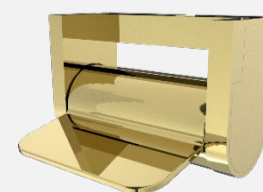
Chrome

\$400



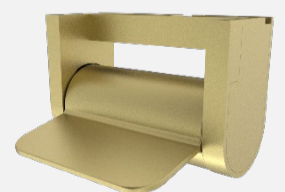
Matte Black

\$450



Polished Gold

\$450



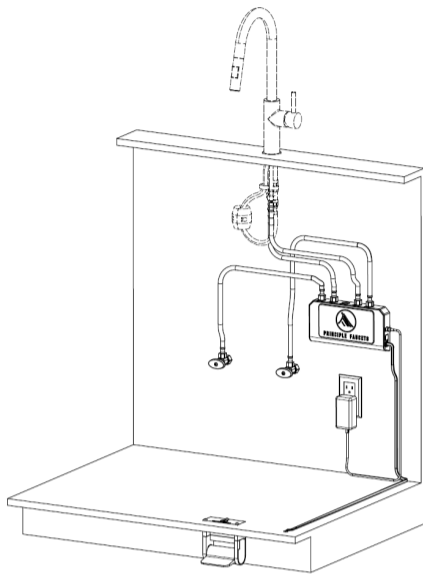
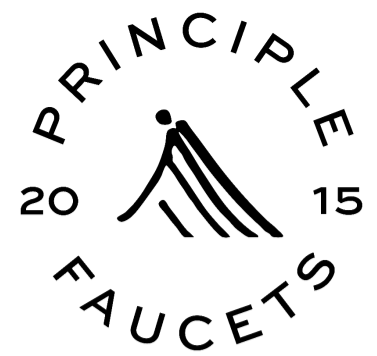
Brushed Gold

\$450

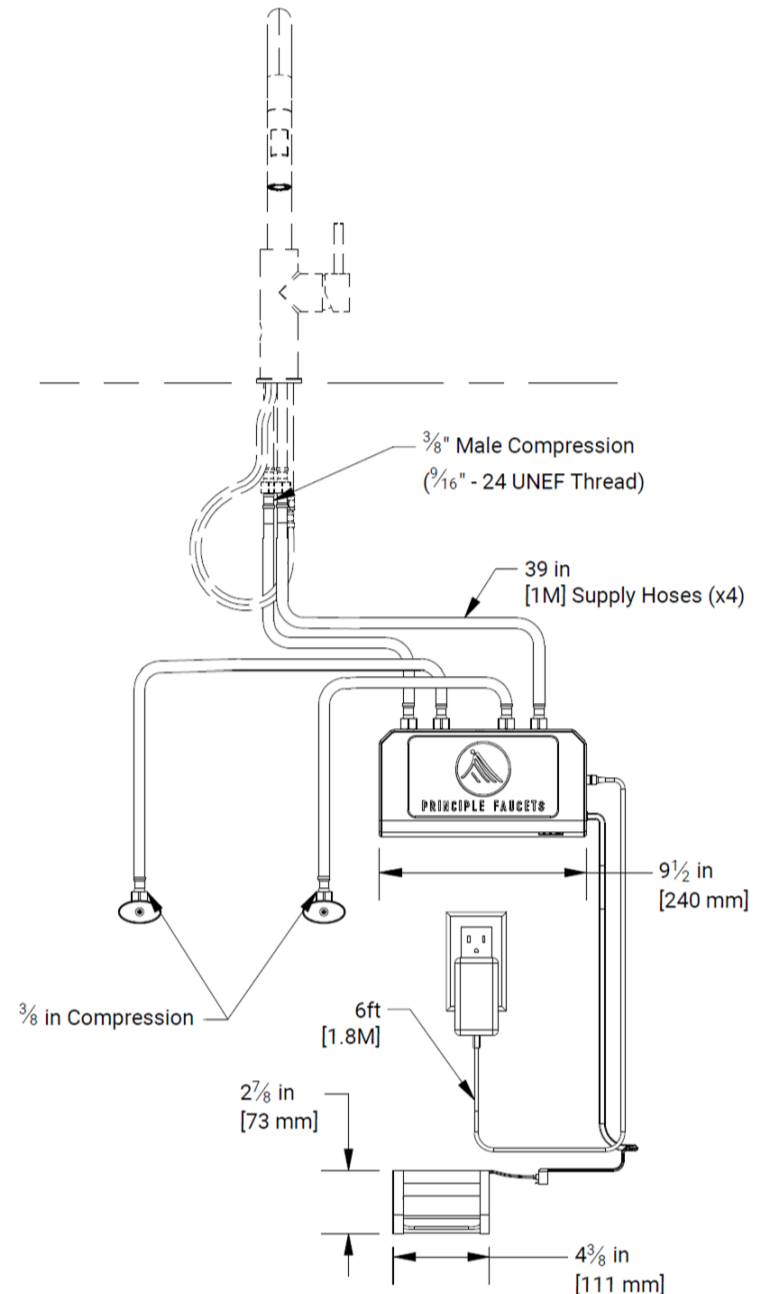
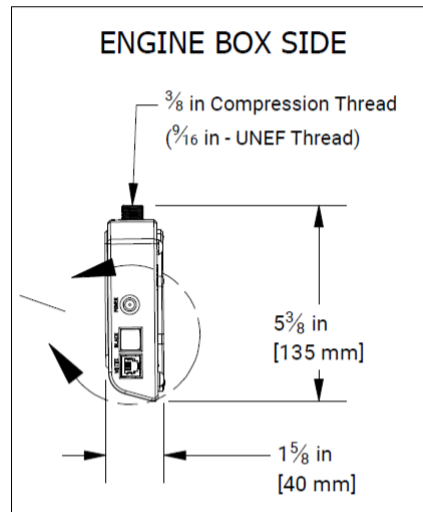
the STEP

Pedal Adapter System

Product Name: STEP 1
Product Number: PF1020001



Installation Example



Technical Information

Installation Instructions:

Installation instructions are provided with the product, however we recommend viewing the step-by-step installation videos found on our website at www.principlefaucets.com/Installation.

Minimum Installation Requirements:

- 2" minimum toe kick depth
- 3.25" minimum toe kick height
- Unswitched 120V AC power outlet/access point

Hoses:

Supply hoses: 39" (1M), 3/8" compression fittings (x4)

All supply hoses are provided for a typical installation. Adapters may be needed if the water supply stop valve connections are not 3/8" compression fittings. These adapters should be available at your local hardware store or by contacting a licensed plumbing professional.

Compatibility:

The Step system is designed to connect to almost any standard faucet. We supply hoses with 3/8" compression fittings but if an adapter fittings or other hoses are needed for your installation, check with your local plumbing professional, hardware store or give us a call. We are happy to assist. The Step system is not recommended for electronic touch or sensor faucets.

Power Requirements:

One unswitched 120V AC power outlet located below the sink and within 6' (1.8M) of the control box mounting location. For lavatory installations a power outlet may need to be installed.

NOTE: Garbage disposals typically use a switched outlet. Switched outlets are not recommended.

Certification/Standards

- cUPC
- ASME A112.18.1/CSA B125.1
- NSF/ANSI 61
- NSF/ANSI 372 – Lead Free
- All US Federal and State material regulations